

Caseta luminoasa LED


BROSURA


Single Sided

The specially treated acrylic in the middle provides a homogenous lighting. Single Sided Smart LEDBOXES are 19 mm in thickness. Offers a built in on/off switch. These LED light panels are an ideal choice for a wide range of indoor applications.



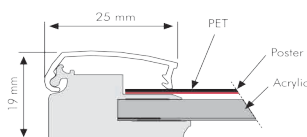
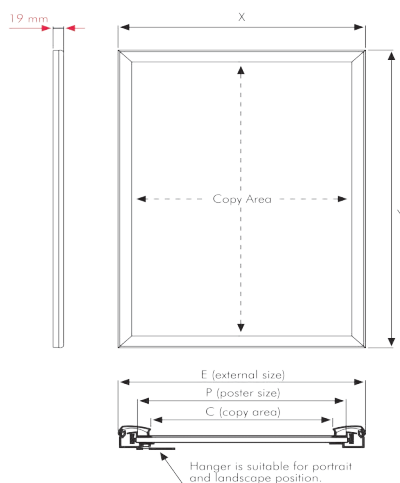
 All units pass CE/UL PAT test and comes along with Quality Certificates.

 LED illumination save up to 60% energy costs (compared to fluorescent technology) with an increased life expectancy.

 The SMART LED BOX's lightweight, slim profile design and low voltage requirements allow it to be mounted anywhere there's access to a regular electrical outlet, and the unique frame extrusion offers a wide range of mounting or hanging options.



- Improved Led technology for improved luminance.
- Pre-treated light guided panel diffuses light even & powerful.
- CE listed electrical components.
- 19 mm, thinnest lightbox we ever sell.
- Offers evenly diffused lux in all sizes.
- Snap - open frame for easy poster change.
- Saves up to 60% energy cost.



| MATERIAL : Silver anodised aluminium PROFILE: 25 MM | | | | | WEIGHT | PACKING SIZE |
|--|----------------|---------------|--------------|-------------|--------------|--------------------|
| | EXTERNAL (x-y) | POSTER | COPY | LIGHTING | WITH PACKING | *W X H X D |
| | 242 X 329 mm | 210 X 297 mm | 190 X 277 mm | 2000-2200 W | 1,100 kg | 260 X 420 X 46 mm |
| | 329 X 452 mm | 297 X 420 mm | 277 X 400 mm | 2000-2200 W | 1,820 kg | 350 X 540 X 46 mm |
| | 452 X 626 mm | 420 X 594 mm | 400 X 574 mm | 2000-2200 W | 2,960 kg | 470 X 720 X 46 mm |
| | 626 X 873 mm | 594 X 841 mm | 574 X 821 mm | 2200-2400 W | 6,530 kg | 650 X 960 X 46 mm |
| | 532 X 732 mm | 500 X 700 mm | 480 X 680 mm | 2200-2400 W | 4,850 kg | 560 X 820 X 46 mm |
| | 732 X 1032 mm | 700 X 1000 mm | 680 X 980 mm | 2000-2200 W | 8,710 kg | 780 X 1100 X 46 mm |
| | 540 X 794 mm | 508 X 762 mm | 488 X 742 mm | 2200-2400 W | 5,130 kg | 570 X 870 X 46 mm |
| | 794 X 1048 mm | 762 X 1016 mm | 742 X 996 mm | 2000-2200 W | 9,250 kg | 820 X 1120 X 46 mm |

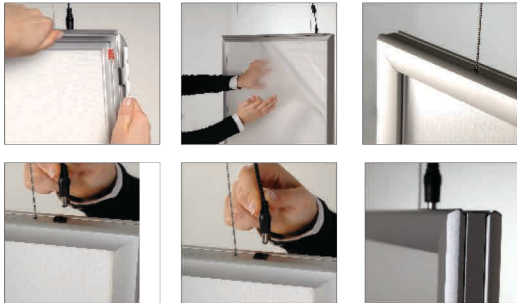


N₁₁


* W: Width H: Height D: Depth


Double Sided

The specially treated acrylic in the middle provides a homogenous lighting. Double Sided Smart LEDBOXES are 27,5 mm in thickness. Offers a built in on/off switch. These LED light panels are an ideal choice for a wide range of indoor applications.



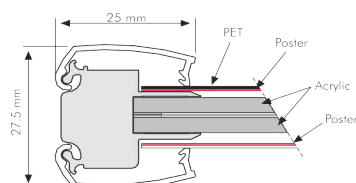
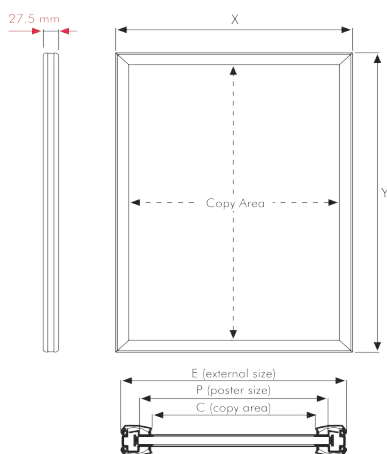
 All units pass CE/UL PAT test and comes along with Quality Certificates.

 LED illumination save up to 60% energy costs (compared to flourescent technology) with an increased life expectancy.

 The SMART LED BOX's lightweight, slim profile design and low voltage requirements allow it to be mounted anywhere there's access to a regular electrical outlet, and the unique frame extrusion offers a wide range of mounting or hanging options.



- Improved Led technology for improved luminance.
- Pre-treated light guided panel diffuses light even & powerful.
- CE listed electrical components.
- 27,5 mm, thinnest lightbox we ever sell.
- Offers evenly diffused lux in all sizes.
- Snap - open frame for easy poster change.
- Saves up to 60% energy gost.



| MATERIAL : Silver anodised aluminium PROFILE: 25 MM | | | | | WEIGHT | PACKING SIZE |
|--|----------------|---------------|--------------|-------------|--------------|--------------------|
| | EXTERNAL (x-y) | POSTER | COPY | LIGHTING | WITH PACKING | *W X H X D |
| | 242 X 329 mm | 297 X 420 mm | 190 X 277 mm | 2000-2200 W | 1,600 kg | 260 X 420 X 46 mm |
| | 329 X 452 mm | 420 X 594 mm | 277 X 400 mm | 2000-2200 W | 2,490 kg | 350 X 540 X 46 mm |
| | 452 X 626 mm | 594 X 841 mm | 400 X 574 mm | 2000-2200 W | 4,220 kg | 470 X 720 X 46 mm |
| | 626 X 873 mm | 841 X 1189 mm | 574 X 821 mm | 1800-2000 W | 8,430 kg | 650 X 960 X 46 mm |
| | 532 X 732 mm | 500 X 700 mm | 480 X 680 mm | 2000-2200 W | 6,450 kg | 560 X 820 X 46 mm |
| | 732 X 1032 mm | 700 X 1000 mm | 680 X 980 mm | 1800-2000 W | 11,640 kg | 780 X 1100 X 46 mm |
| | 540 X 794 mm | 508 X 762 mm | 488 X 742 mm | 2000-2200 W | 6,900 kg | 570 X 870 X 46 mm |
| | 794 X 1048 mm | 762 X 1016 mm | 742 X 996 mm | 1800-2000 W | 12,850 kg | 820 X 1120 X 46 mm |



* W:Width H: Height D: Depth